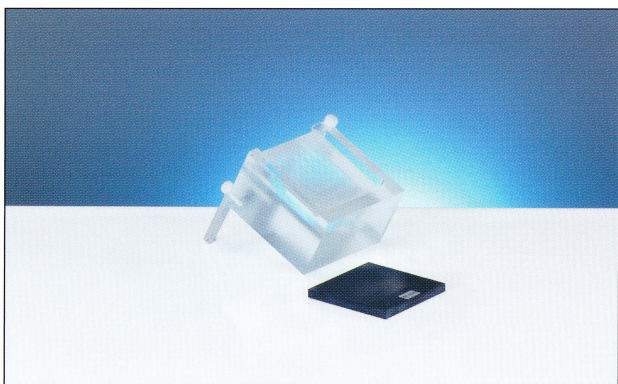


NORMI MAM Biopsy Mammo Test Object



*Test object for quality control of biopsy
X-ray units for mammography*

Features

- ▶ Dimensions 80 mm x 75 mm x 46 mm
- ▶ PMMA block with cut-out of 60 mm x 60 mm x 6 mm
- ▶ Holds the test element KP-ACR biopsy or the test element AP

The NORMI MAM Biopsy test object is composed of a base plate with a cut-out for test element, two adjustable stops and a locking bar. The adjustable stops are used for mounting to the locating face and are revolving. The locking bar holds the test element in position if the base plate is used in vertical orientation. You can insert the PTW test element KP-ACR biopsy or the test element AP into the cut-out. The set includes the test element KP-ACR biopsy.

Ordering Information

L981300 NORMI MAM Biopsy Set

incl. base plate and test element KP-ACR biopsy

T42036 NORMI MAM Biopsy

base plate without test element