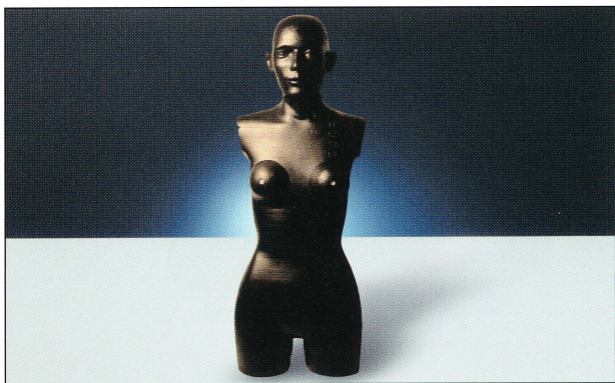


RANDO

Sliced Body Phantoms



Body-shaped sliced therapy phantoms with hole grids for realistic radiation therapy dosimetry with TL detectors

Features

- ▶ Simulate dosimetry conditions of human bodies
- ▶ Make it possible to measure doses inside the body phantom at any location using thermoluminescent detectors
- ▶ Simulate soft tissue and feature natural skeletons

The anthropomorphic RANDO phantoms are body-mimicking tissue-equivalent therapy dosimetry phantoms with natural skeletons. The phantoms are available in male and female shape. They consist of 25 mm thick slices with 15 mm x 15 mm hole grids to accommodate TL detectors. Phantoms for the use of TL rods feature thin wall acrylic inserts in the drill-holes. The hole grids can be prepared for the use of cylindrical TL rods (1 mm \emptyset x 6 mm), squared TL rods (1 mm x 1 mm x 6 mm) or cylindrical TL chips (4.5 mm \emptyset x 0.8 mm). Pairs of breast attachments in five different sizes (A, B, C, D, E) for male and female phantoms are available.

Alternatively, there are tissue-equivalent adult and children phantoms available, totally based on artificial material.

Additional information is available upon request